

WLH series Infrared heating SMART mirror with LED



The WLH series SMART heating mirrors have a number of features, including a NiCr heating wire that can also be used to defog the mirror, LED lighting and SMART FUNCTIONS such as weather forecasting, humidity measurement, outdoor or indoor temperature measurement. SMART functions can be controlled via the Wise mirror app. The panel can be controlled via remote control or via WiFi app on your phone.

Product number

IGT2-GxxxxWLH-V/H

Function

Heating
Dimmable LED light - warm white 3000 K - cold white 6000 K
SMART display- displaying weather forecast, date and time, outdoor and indoor temperature, humidity

Certification

CE, FCC

Equipment

Built-in 2in1 WiFi thermostat, control via remote control or WiFi app
Touch type switches: SMART display and LED light

Waranty

2 years

Contact us

+420 606 635 542 info@byecold.eu

Byecold.eu s.r.o., Na Výhoně 4400, CZ-695 01 Hodonín

Technical parameters

Heating element	NiCr heating wire	Wave length	8 – 15 μ
Surface material	Tempered mirror	Cable length	1,9 m terminated with plug
Back material	Aluminium sheet	IP grade	IP54
Frame	Frameless	Radiation angle	Up to 170°
Surface temperature	Mainly 70 - 90 °C	Overheat protect	YES
El. conversion efficiency	98%	Voltage	240V/50HZ
LED light strip	120 lamps/m	LED light	Dimmable 3000 - 6000 K

Installation

Wall mounting.

The product is equipped with brackets on the back.

Drawing with mounting holes is included in the product package.

Description of types

Model	Power (W)	LED light power (W)*	Weather display power (W)	Approx m ²	Size (mm)	N. W. (kg)	Box size (mm)	B.W. (kg)
IGT2-G0606-WLH	200	10	2	3,6	600*600*22	6,6	710*390*75	7,9
IGT2-G0806-WLH-H	250	12	2	4,5	800*600*22	8,4	910*690*75	10,2
IGT2-G0806-WLH-V	250	12	2	4,5	600*800*22	8,4	910*690*75	10,2
IGT2-G1006-WLH-H	350	13	2	6,3	1000*600*23	10,4	1110*690*75	12,2
IGT2-G1006-WLH-V	350	13	2	6,3	600*1000*23	10,4	1110*690*75	12,2
IGT2-G1206-WLH-H	500	15	2	9,0	1200*600*23	12,5	1210*690*75	14,5
IGT2-G1206-WLH-V	500	15	2	9,0	600*1200*23	12,5	1210*690*75	14,5

The total thickness of all types is 45 mm including mounting brackets.

Description of shortcuts

IGT2-GxxxxWLH-H: Frameless horizontal infrared heating panel with mirror surface, integrated LED light, SMART display, and built-in 2in1 WiFi thermostat, control via remote control or WiFi app

IGT2-GxxxxWLH-V: Frameless vertical infrared heating panel with mirror surface, integrated LED light, SMART display, and built-in 2in1 WiFi thermostat, control via remote control or WiFi app

*Watts correspond to the power of the single LED light

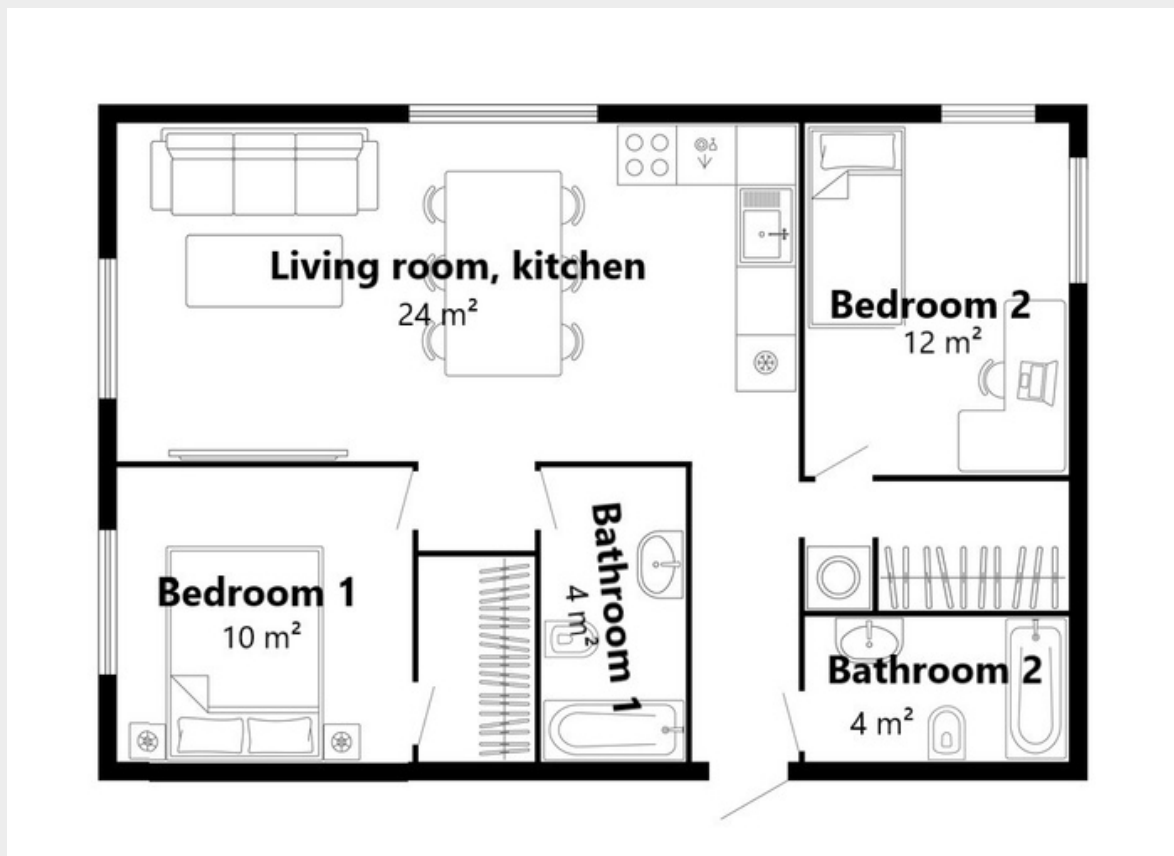
Maintenance

Dust particles remove by vacuum cleaner with dust brush or by soft damp cloth. Never clean under running water.

Storage

Store the product in horizontal position, protecting from moisture and frost.

Example illustration of infrared panels in an apartment



Bathroom 1, 2- 220 W

Optimal option: 1x IGT2-G0806WLH-H/V (1x 250 W)